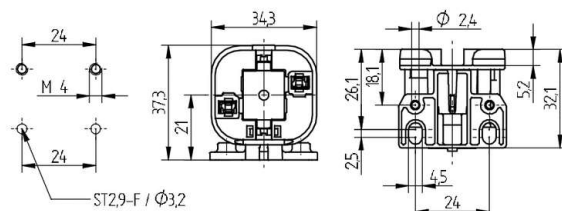


 Create pdf

## Lampholders for compact fluorescent lamps

26.745.2331

G24 / GX24



colour	pkg.	wt.	part no.
white	250	10 g	26.745.2331.50

Key: d-3 (26 / 32 Watt)

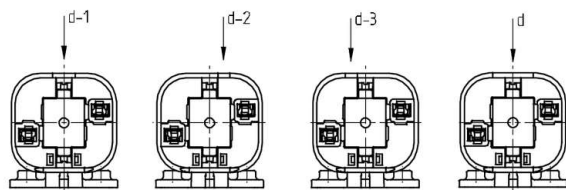
Approval: additional cULus




For lamps TC-D, TC-T

Screw fixing horizontally

Housing: PBT

- Long holes  $\varnothing 4.5 \times 2.5$  mm for screws ISO 1207 - M4
- Holes  $\varnothing 2.4$  mm for self-tapping screws ISO 1481 - ST2.9 - F
- Please note the base diameter (max.  $\varnothing 61$  mm) for lamps with base GX 24.
- If required screw fixing foot 26.745.-440. 50 and lampholders can be supplied separately



T 140		 0.5 - 1.0 mm <sup>2</sup>	 18 AWG 0.5 - 1.0 mm <sup>2</sup>
-------	---	--	--

Document generated on: We, 8. February 2017 - 16:56