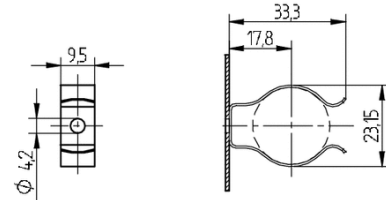




Technology for Light

Lamp support for T8 lamps 26.928.-101.14





Technology for Light

Lamp support for T8 lamps 26.928.-101.14

DESCRIPTION

Wiring above the mounting plate is also possible

Snap in pins for IP 40

A pair of lampholders provides a lamp length tolerance compensation of 2 mm

Product name:	Lamp support for T8 lamps
Mounting method 1:	Screw mount
Material:	Material: Metal
Other:	Lamp support
Color:	zinc plated
Weight:	6
Pkg.:	500